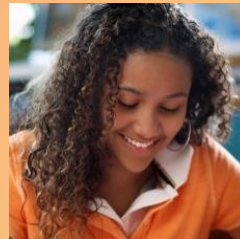


Everett Public Schools

A story of growth, change,
continuous improvement

And what's on the horizon

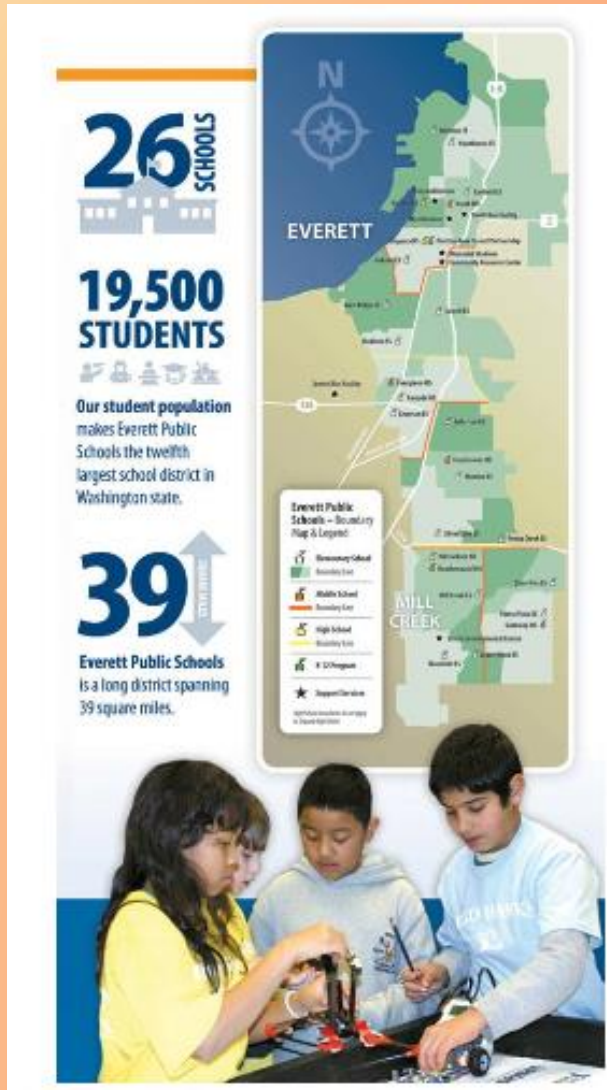
We are Everett
Public Schools.
Thanks for helping
us prepare for our
futures.



Mill Creek City Council, April 12, 2016

Who we are

From Marysville to Bothell

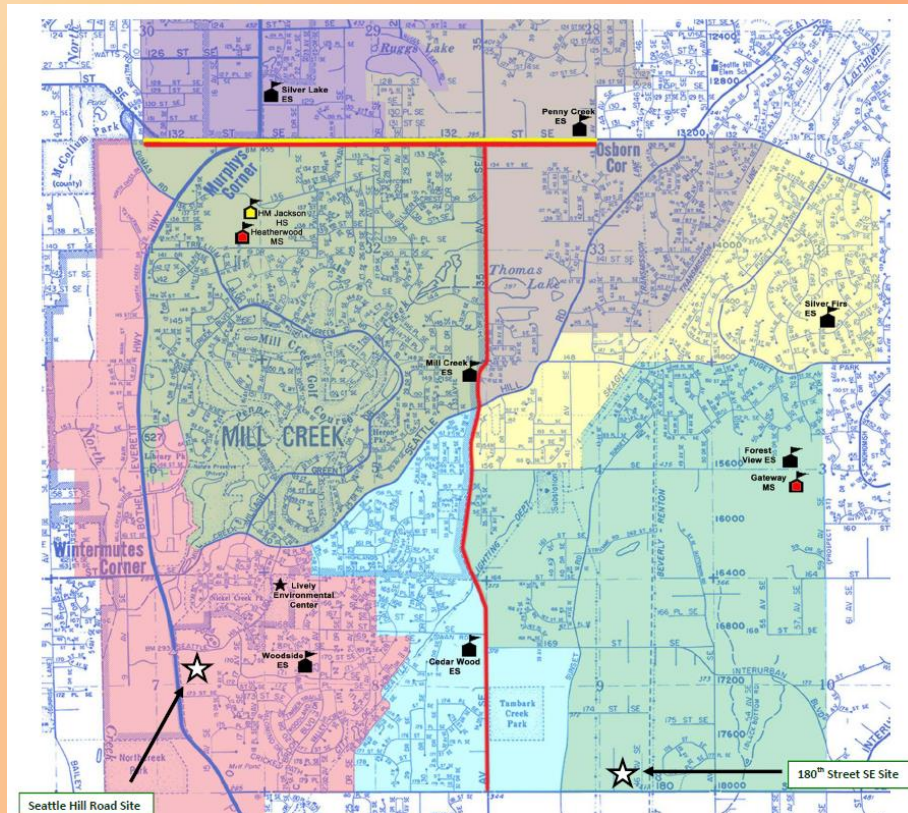


- 2 cities – Everett & Mill Creek
- 3 regions, each connected with a comprehensive high school
- Multiple neighborhoods and enclaves



Who we are

Where most *Mill Creek* students attend school



Jackson HS	863
Mill Creek	635
Heatherwood	526
Penny Creek	215
Cedar Wood	166
Gateway	134
Silver Lake	129
Woodside	95
Silver Firs	53
Forest View	19

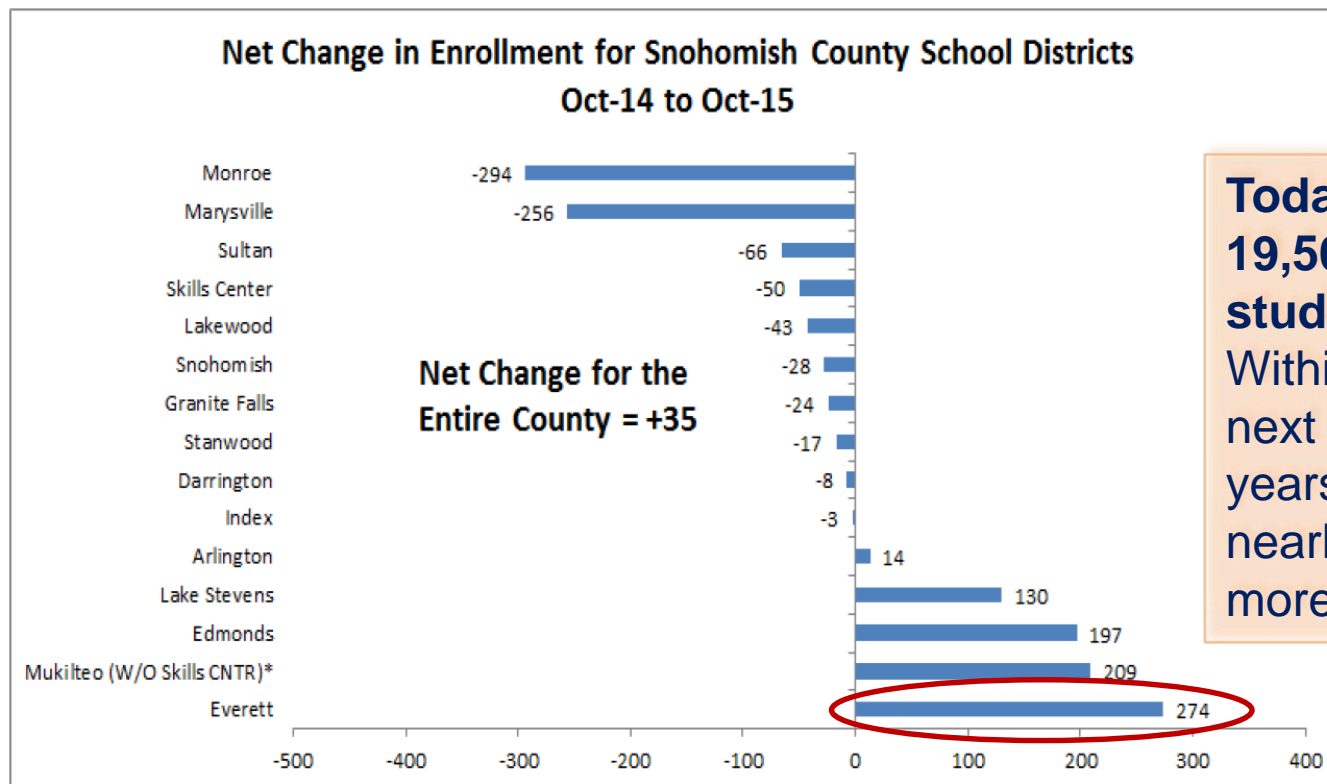
2,883 students with *Mill Creek* addresses attend **21** different district schools

Growing

Everett Public Schools – fastest growing county school district



EPS Enrollment Growth Comparison



**Today,
19,500
students.
Within the
next 7
years,
nearly 2,000
more.**

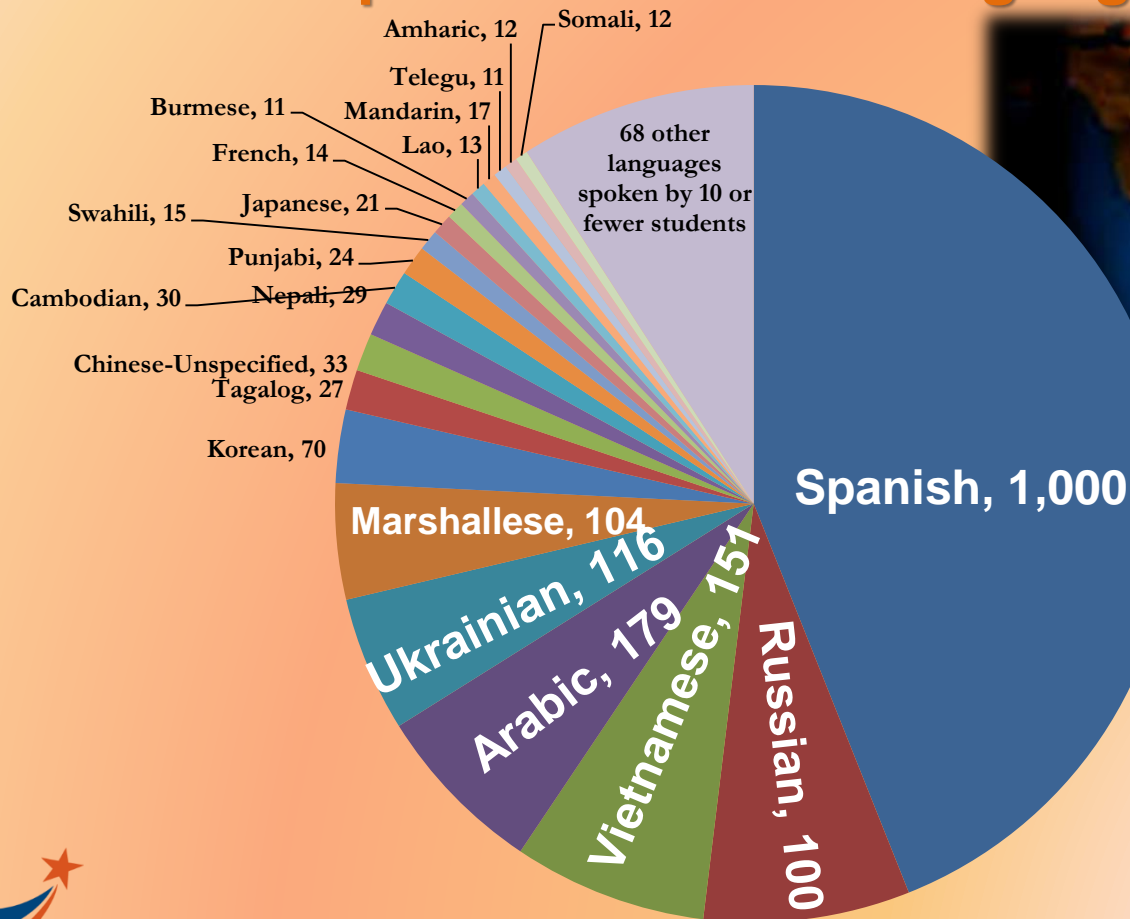
February 9, 2016



Growing & changing

On Oct. 1, 2015

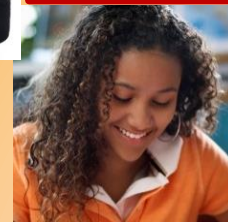
Students spoke 89 different languages



Growing & changing

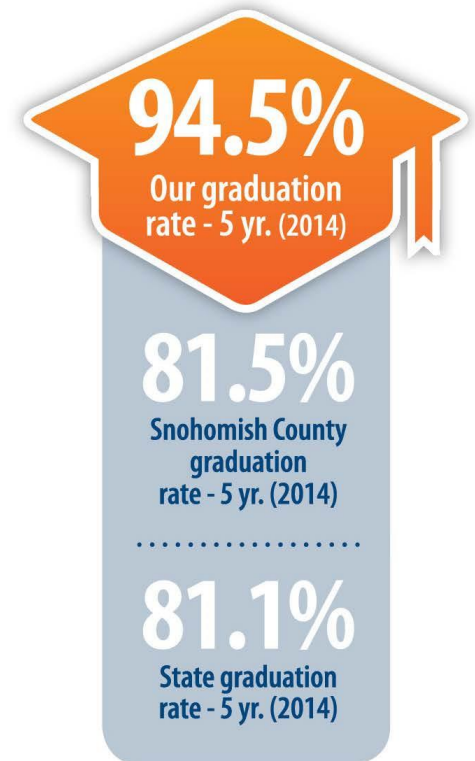
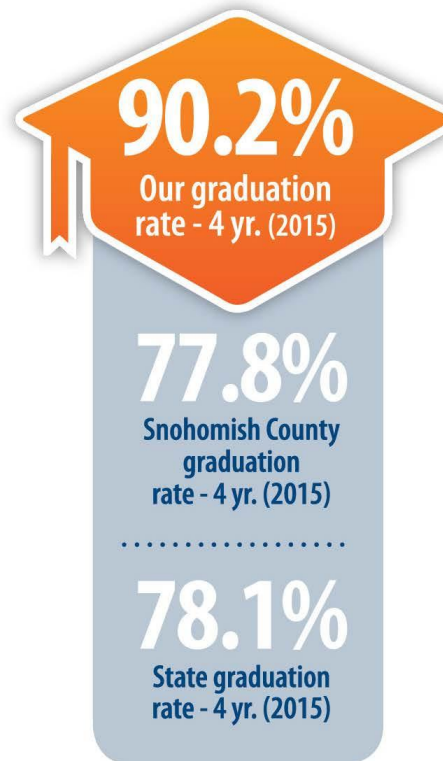
District poverty rate is 40.4%

Four out of 10
of our students
live in poverty



Continuous improvement

Everett graduation rates compared to state & county



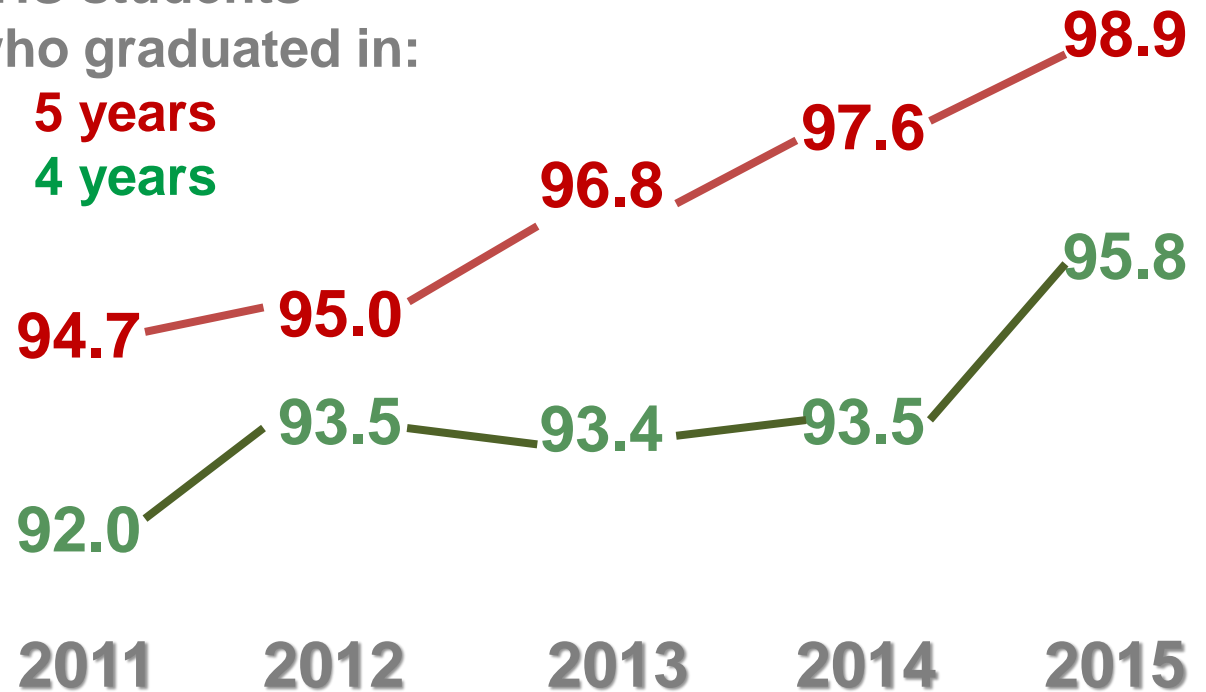
Continuous improvement

JHS graduation rate upward trend



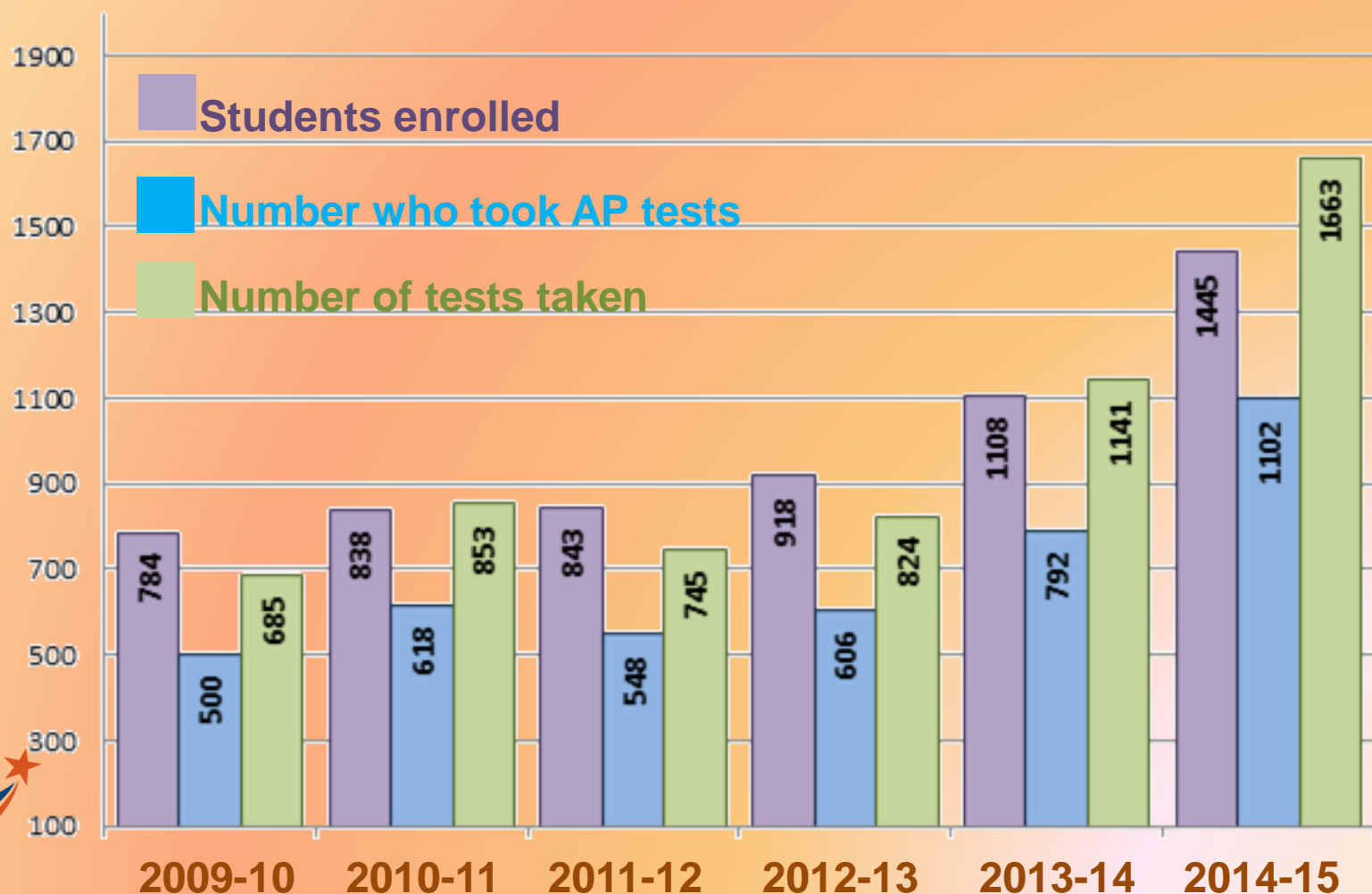
JHS students
who graduated in:

- 5 years
- 4 years



Continuous improvement

More students taking challenging classes
Advanced Placement growth over 5 years



Continuous improvement

More students taking challenging classes

College in the High School enrollment trend

2012

Students

Classes

2,048

6,128

2015

Students

Classes

2,612

8,784



On the horizon

For 2016 and beyond

1. Replacement Safety, Building, and Instructional Technology Improvements Levy
2. Capital Bond

Who has been involved?

What are the projects?

Why these projects?

What might this cost?

What's the timeline?



On the horizon

Bond & Capital Levy

Who has been working on this?

For how long?

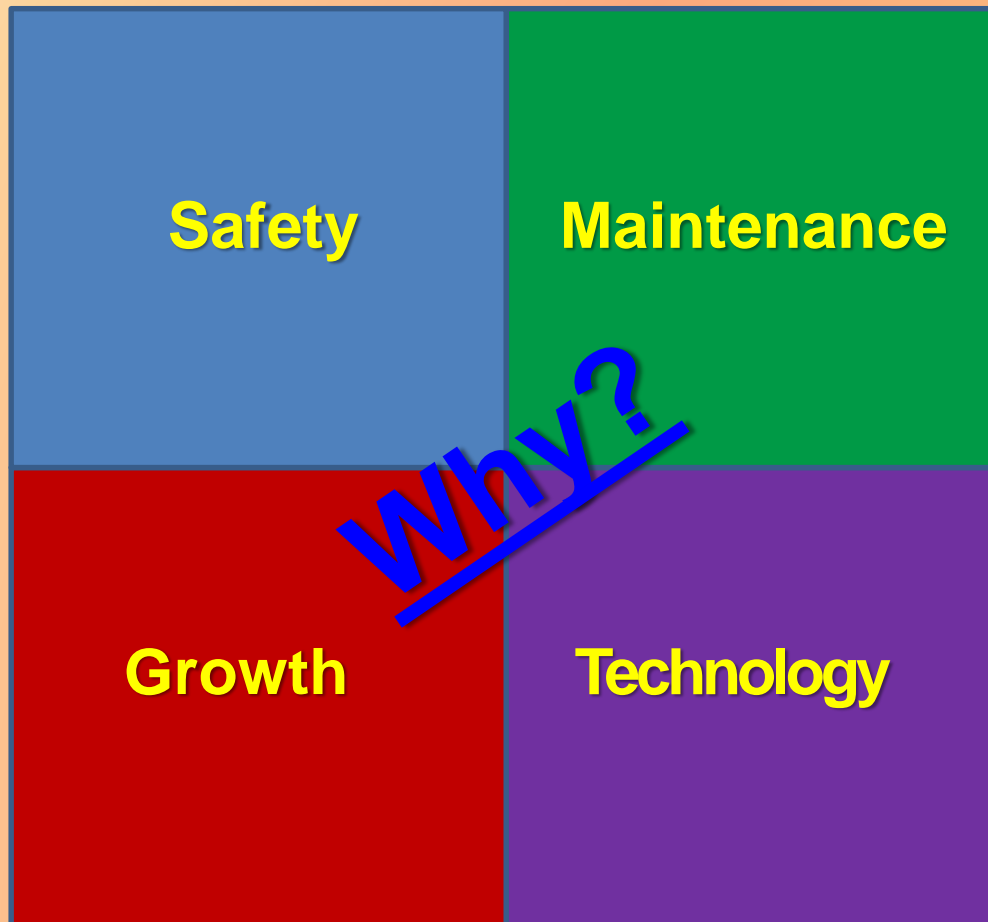
Since spring 2014

- 14 public board meetings, study sessions, *Fishbowls*
- Board tours of Microsoft and Microsoft Demonstration School
- 2 *Thoughtexchange* online community perception engagements
- Capital Facilities Advisory Council
- Facilities Advisory Council
- Technology Advisory Council
- Presidents' Advisory Council
- PTSA Council
- Economic Alliance of Snohomish County



On the horizon

Bond & Capital Levy, April 26, 2016



If approved on
April 2016,
bond funds would be
available as projects
launch

Capital Levy funds would
be available over 6 years,
beginning spring 2017

On the horizon

Bond & Capital Levy

What might this cost?



Purple = Past & present tax rates for district

2014 bond failure and EXPIRING capital levy brought rate to low of \$5.18.

Green = Projected tax rates if both bond and levy are approved.

New rate would begin in 2017 and remain stable through 2020. The new projected rate is LOWER than what residents paid in 2013 and 2014.

Thank you!

We are growing, changing & continuously improving because of your support

Suggestions? Questions?

We are Everett
Public Schools.
Thanks for helping
us prepare for our
futures.

